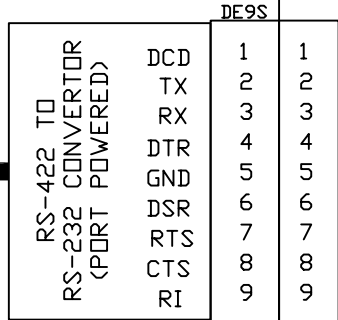
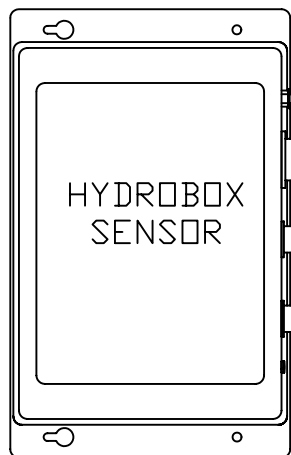


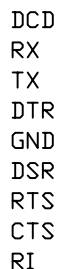
# HYDROBOX TO HYPACK SERIAL INTERCONNECTION

P04416

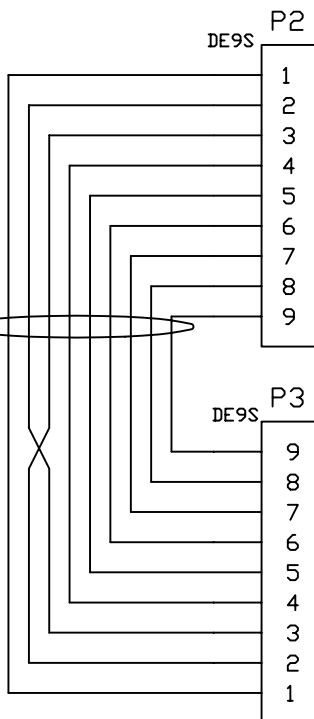


## WINDOWS PC

### HYDROBOX SENSOR I/F COM "A"



C00189-1  
NULL MODEM



### HYDROBOX DEPTH OUT / ANNOTATION IN COM "B"

NOTES:  
 1) IN HYDROBOX S/W CONFIGURE NMEA I/O SET YOUR NMEA OUTPUT PROTOCOL TO MATCH HYPACK S/W SELECTION FOR COM "C". SELECT PMC STRING FOR DEPTH. CHECK "ENABLE NMEA OUT" BOX.  
 2) (OPTIONAL) TO ENABLE HYPACK EVENT MARKS TO BE DISPLAYED IN HYDROBOX SOFTWARE. SET UP HYDROBOX S/W, UNDER CONFIGURE EVENTING MENU, CHECK "ENABLE EXTERNAL EVENTING". SELECT SAME COM PORT AS COM "B" & INSURE PORT PROTOCOL MATCHES "NMEA OUT" & COM "C".

### HYDROBOX TO HYPACK I/F COM "C"

NOTE: IN HYPACK S/W USE "SYQWEST.DLL" DATED 2-13-2008 OR LATER. SET PORT PROTOCOL TO MATCH COM "B".

### GPS INPUT TO HYDROBOX COM "D"

NOTE:  
 1) IN HYDROBOX S/W UNDER CONFIG NMEA 0183 INTERFACE, CHECK "ENABLE NMEA IN" BOX AND SET PORT PROTOCOL TO MATCH YOUR GPS SETTINGS.  
 2) CHOOSE APPROPRIATE STRINGS FOR POSITION AND HEADING.

### HYPACK / GPS INPUT COM "E"

NOTE: IN HYPACK S/W SET PORT PROTOCOL TO MATCH GPS SETTINGS, MUST BE SAME AS USED ON COM "D".

C00189-2  
Y-SPLITTER

