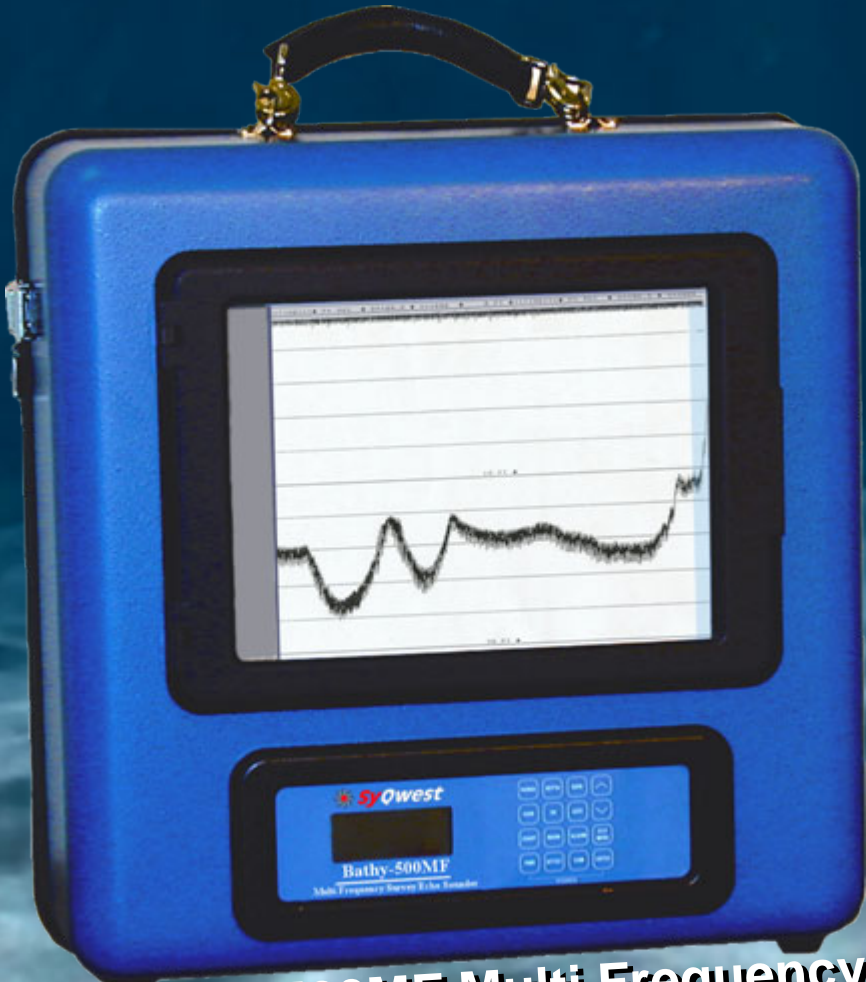
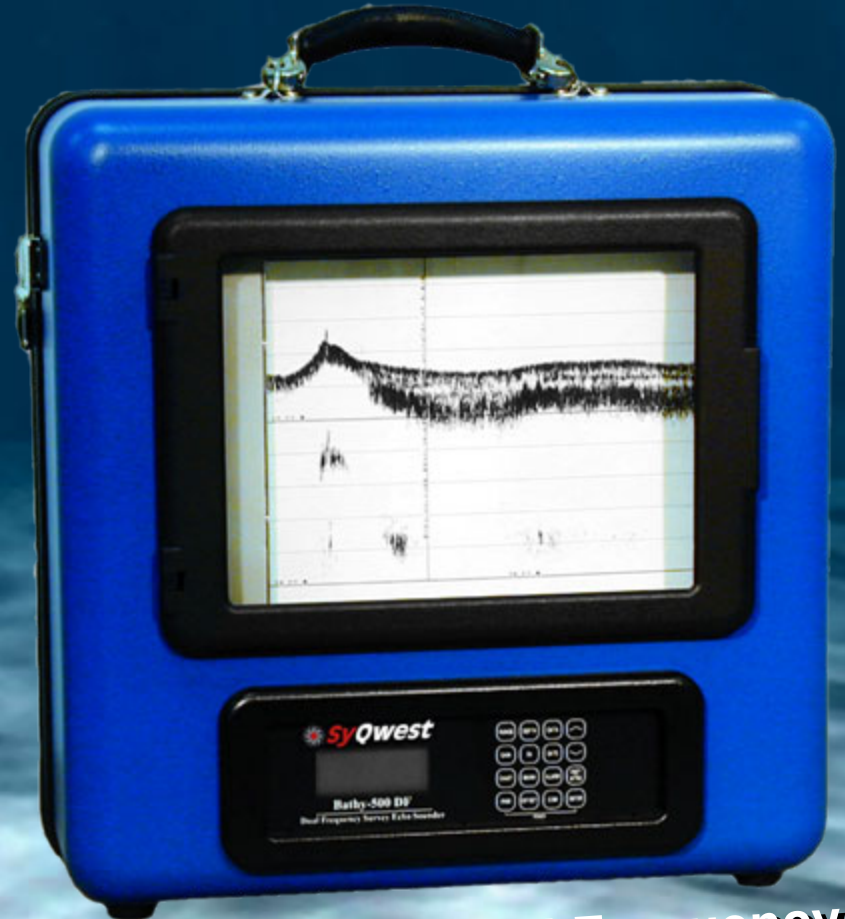


# ***Bathy-500™***

**Hydrographic Survey Echosounders**



**Bathy 500MF Multi Frequency**



**Bathy 500DF Dual Frequency**

***SyQwest inc.***

# ***Bathy-500 Series***

## ***Background Information***

The Bathy-500 Series of echo sounders was specifically designed to provide the hydrographic surveyor with the best thermal chart based scientific echo sounder in the world. The echo sounder is available in single and dual frequency options and is portable and rugged. It has many features which are specifically designed for ease of use and reliability. SyQwest Inc has sold over 3,000 Bathy-500 Series echo sounders world wide in the last 10 years.

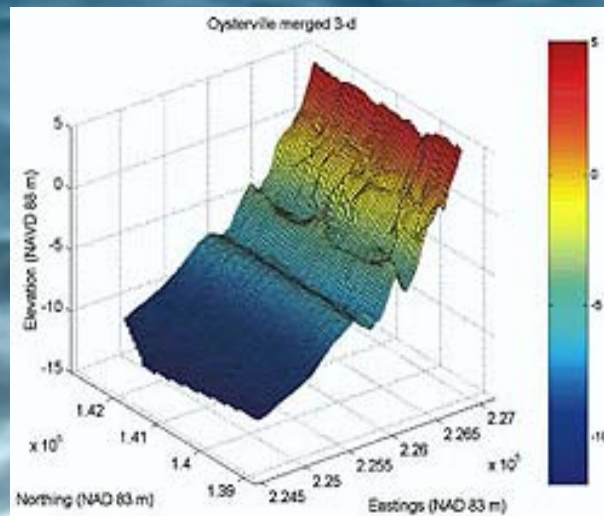
***SyQwest inc.***

# ***Bathy-500 Applications***

- **Lake and River Hydrographic Surveys**
- **Inshore and Coastal Hydrographic Surveys**
- **Pre and Post Dredging Assessment Surveys**



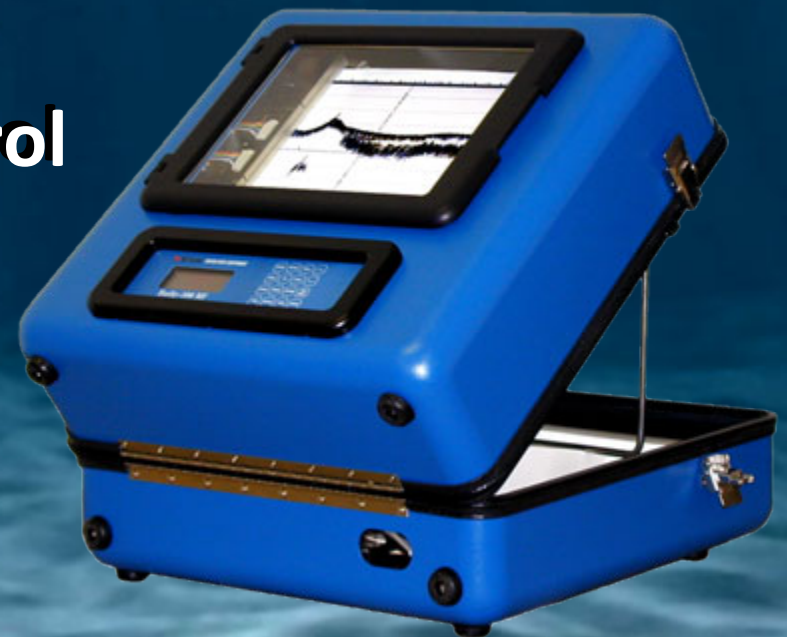
➤ Hidrógrafo H&O realizando la configuración inicial de escala gráfica en una ecosonda Syquest Bathy 500MF. - Bayobar - Miskimayo - Feb 2006.



➤ Ecograma en lectura constante y pantalla digital mostrando la profundidad actual. Bayobar - Miskimayo - Feb 2006.

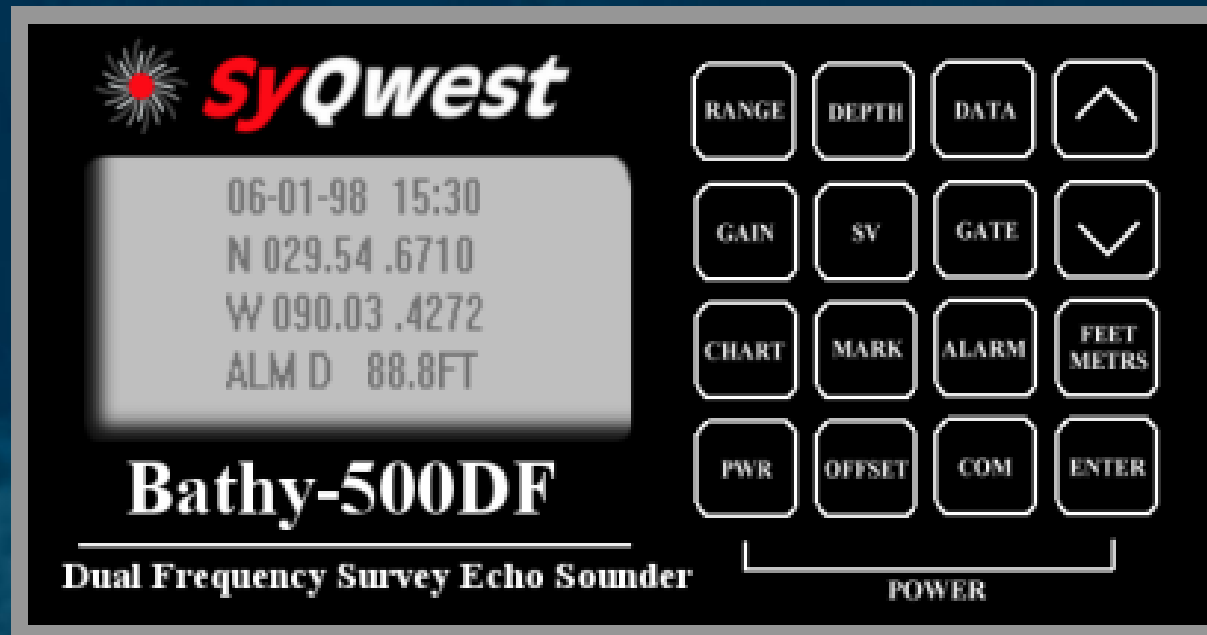
# ***Bathy-500 Features***

- **Ruggedized Design**
- **Portable Water Resistant Design**
- **User Selectable Frequency Control**
- **High Resolution Thermal Printer**
- **Dual Frequency Upgradeable**
- **(Optional) internal DGPS**
- **Compatible with Hypack™  
and HYDROPro™ Software Processing Packages**
- **Depth Resolution 1cm**



***SyQwest inc.***

# ***Bathy-500 User Interface***



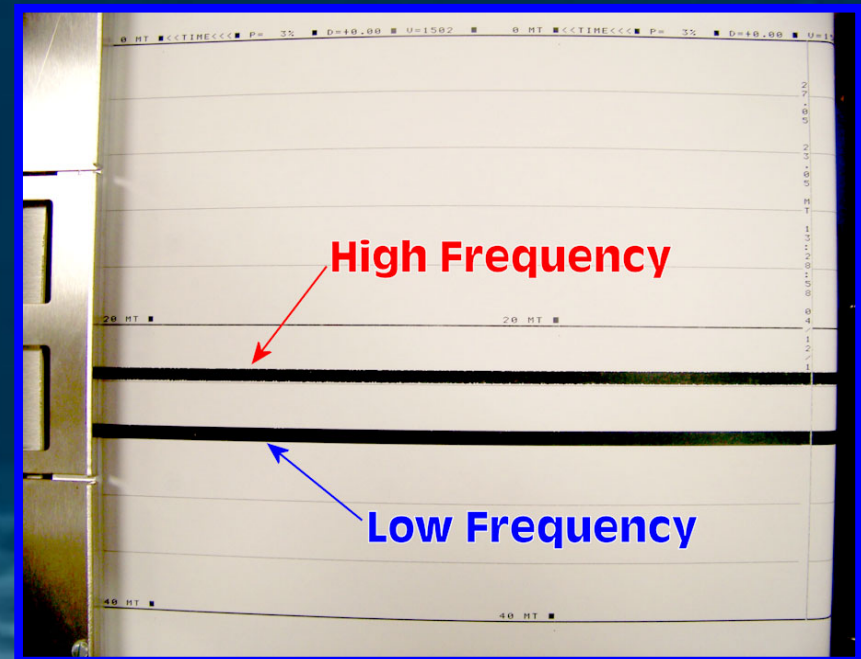
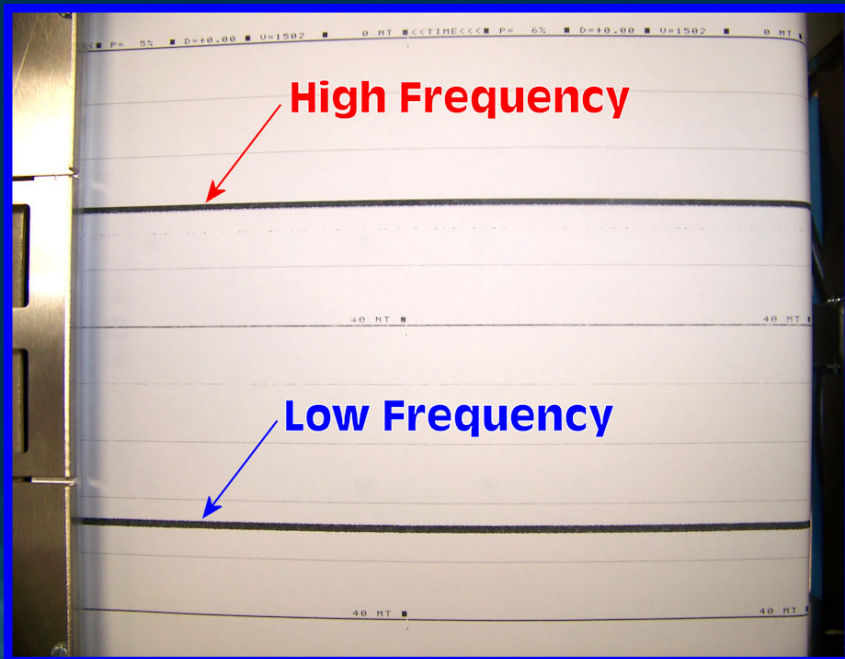
- **Keypad and LCD Display**
- **Rugged and Simple to use**
- **Large Numeric Depth Display**

# ***Bathy-500 New Features***

- **Heave Compensator input**
- **Faster printing speeds 1X thru 7X up to 21.5 cm per minute**
- **Merge and Split operational print modes**
- **Independent Draft offset for HF and LF**
- **Centimeter resolution for Draft offset**
- **User selectable grid lines**

***SyQwest inc.***

# *Split & Merged Operational Print Modes*



## **Split Mode:**

The chart is divided in half with each frequency independently printed.

The higher frequency is printed on the upper half of the chart, the lower frequency on the bottom half.

## **Merged Mode:**

High and low frequency are printed together utilizing the full chart display.

With the higher frequency printed above the lower frequency.

# *Optional items available for the Bathy-500*

- **Transducer over the side pole mount**
- **Internal Trimble DMS Series DGPS**
- **EDI Echo Sounder Test Set**
- **Heave Compensator**



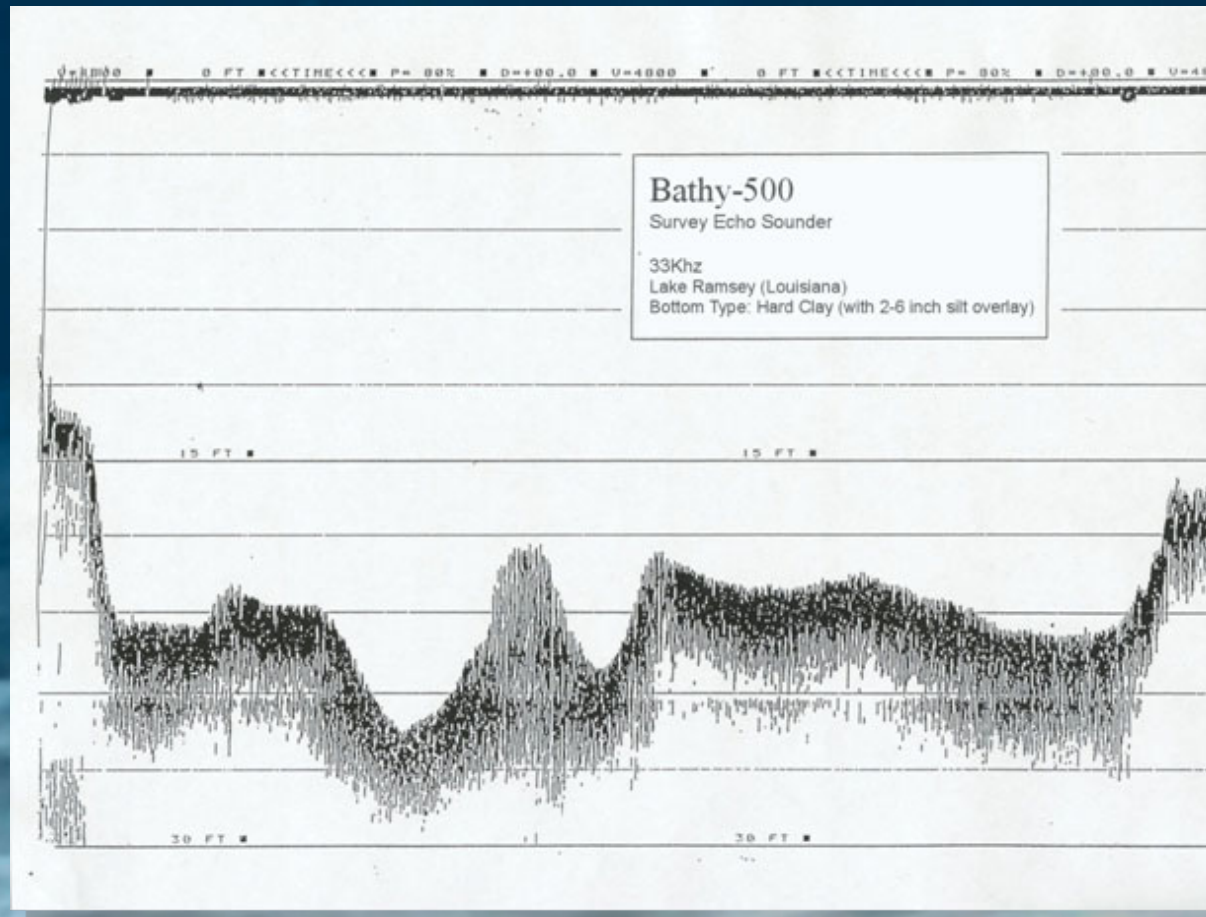
# ***Bathy-500 Advantages versus the Competition***

- **Price versus Performance**
- **Less cost for comparable function**
- **Dual Frequency Upgradeable**
- **Internal DGPS Upgradeable**
- **Low meantime between failures**
- **Exceptional Customer Support**

***SyQwest inc.***

# ***Bathy-500 Series 33Khz Data***

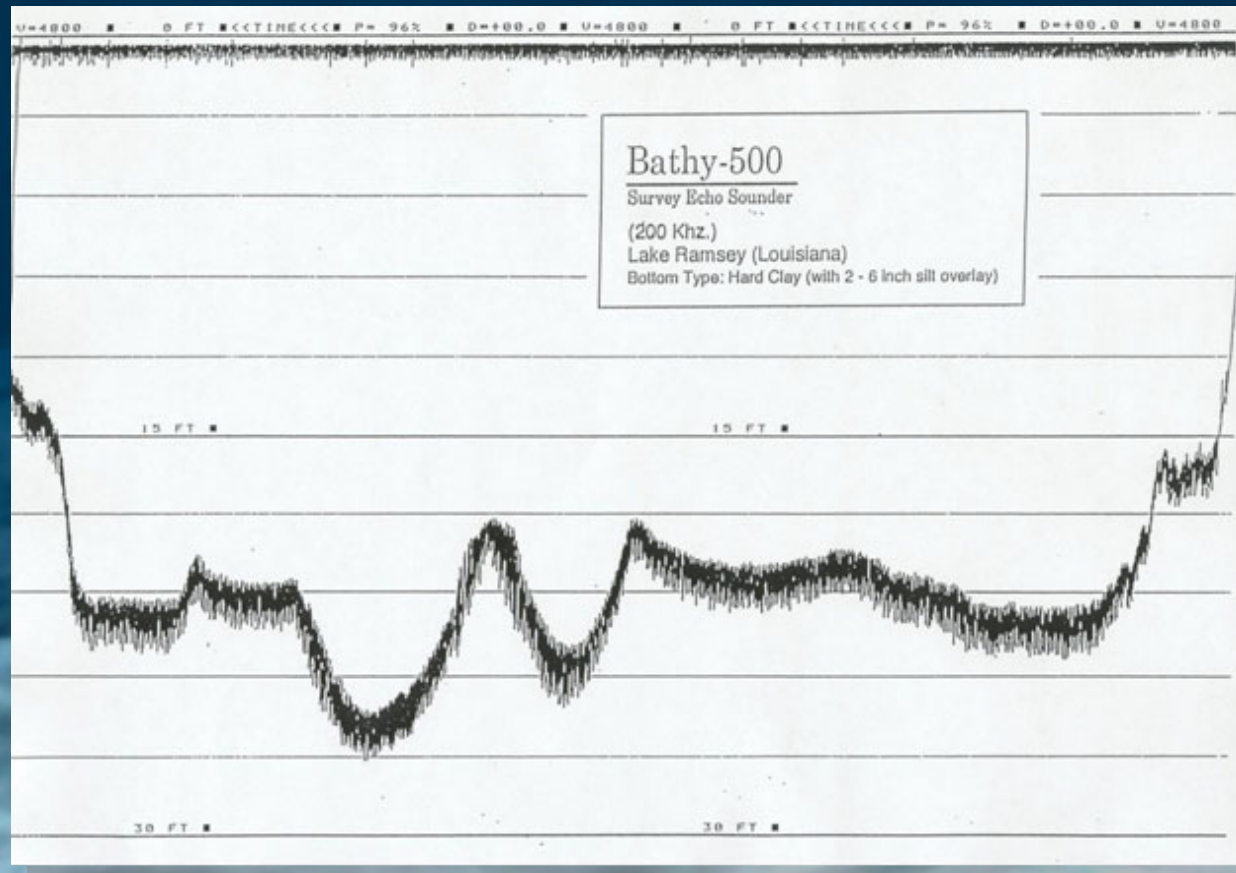
- Lake Ramsey Louisiana
- Bottom Type: Hard Clay (with 2-6 silt overlay)



***SyQwest inc.***

# ***Bathy-500 Series 200Khz Data***

- Lake Ramsey Louisiana
- Bottom Type: Hard Clay (with 2-6 silt overlay)

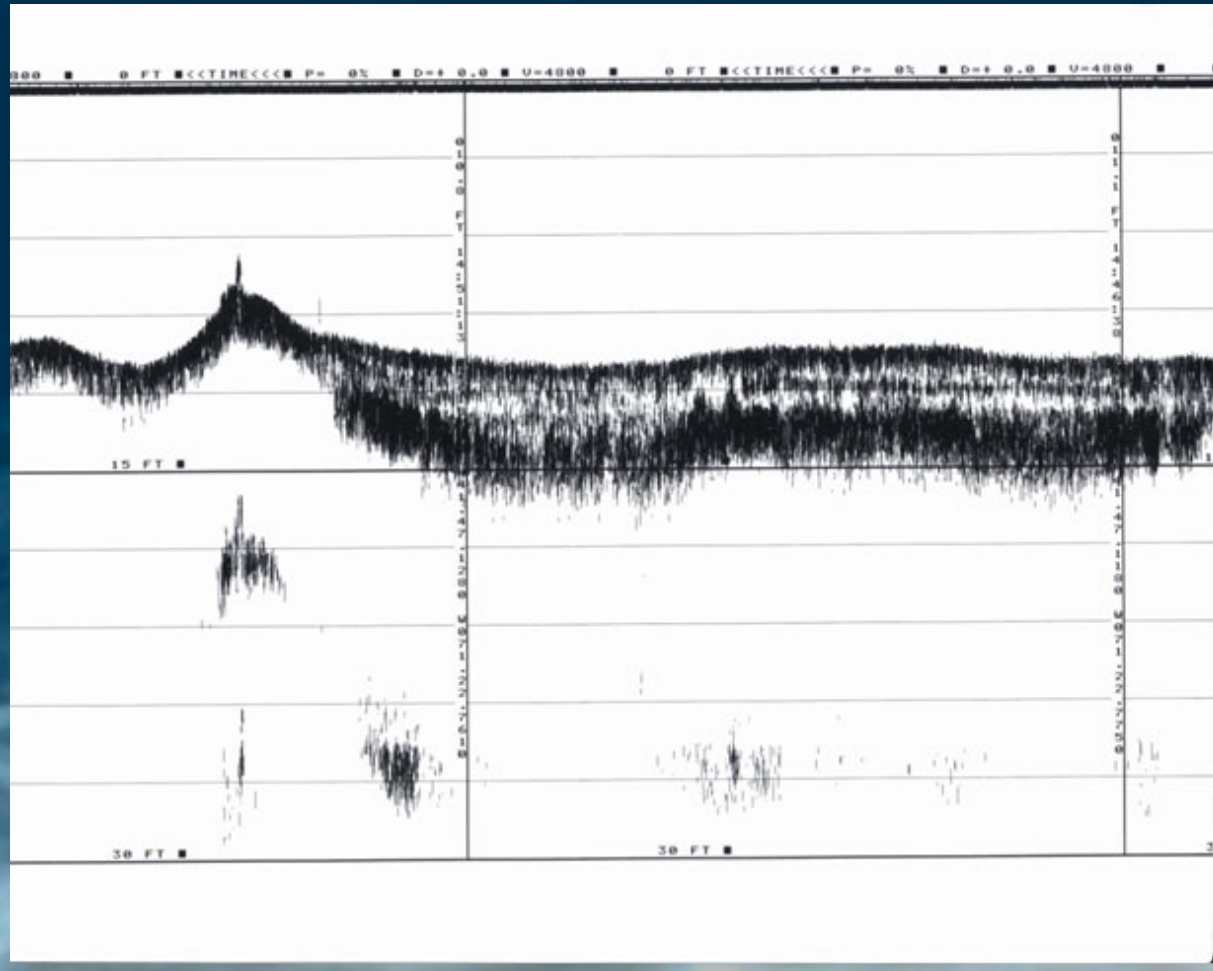


***SyQwest inc.***



# *Bathy-500DF 33/210Khz*

- Providence Harbor, silt over sand



***SyQwest inc.***

# ***SPECIFICATIONS***

- **Depth Ranges:** Units of 0-15, 0-30, 0-60, 0-120, 0-240, 0-480, 0-960, 0-1920 Feet or 0-5, 0-10, 0-20, 0-40, 0-80, 0-160, 0-320, 0-640 Meters
- **Phasing:** 0-120, 60-180, 120-240, 180-300,etc.. (displays 120ft range at 60 ft increments up to 1800-1920) Feet, Auto or 0-40, 20-60, 40-80, 60-100, 80-120,etc..(displays 40m range at 20m increments up to 600- 640) Meters, Auto
- **Chart Record:** 8.5 inch X 90 Feet (21.59cm x 27.43mt) High-Contrast Thermal Paper
- **Digital Display:** LCD (4 lines X 16 characters) 0.25 inch (6.35mm) characters (Depth Display 0.75 inch (19.05mm) characters) (Backlighting: Electro-luminescent)
- **Resolution:** 0.01 units for depths less than 100 meters; 0.1 for depths greater than 100 meters; 0.1 feet on all ranges
- **Accuracy:** Meets or exceeds all current IHO hydrographic requirements for single beam echo sounders  
0-40m 2.5cm, 40-200m 5.0cm, >200m 10.0cm
- **Depth alarms:** Shallow & Deep (selected by keypad)
- **Speed of Sound:** 4600 - 5250 feet/second (1393 - 1590 meters/second) (user selected via keypad)
- **Offset:** 0 to +30 feet or 0 to +10 meters (allows the user, via keypad, to adjust for net sum of transducer depth and tide)
- **Geographic Pos.:** NMEA-0183 Format GGA or GLL Format from GPS/DGPS
- **Data I/O:** COM 1 provides bi-directional interface to PC or other peripheral device; This port accepts external annotation from external sources such as hydrographic software. COM 2 accepts GPS/DGPS inputs and provides additional (from COM1) data outputs.
- **Data Output:** A) NMEA-0183 Format (GGA or GLL) B) RS-232/422 Data Output to the following formats: ODEC PMC dt (true depth & status) - ODEC dpt (proprietary format; time & position [when available], true depth)- Atlas DESO 25 - ODOM Digitrace - ODOM Echotrac - NMEA dbt - NMEA dbs
- **Heave Compensation:** Compatible with Teledyne TSS Format (*Bathy-500DF*)
- **Acoustic Output:** *Bathy-500DF; Single and Dual (interleaved) frequencies (user selectable & changeable via keypad) from these: 33kHz,40kHz,50kHz, 210kHz, 33/210Khz, 50/210kHz (@600watts maximum)*  
*Bathy-500MF; Single frequency ( user selectable & changeable via keypad) from these: 33Khz,40Khz, 50Khz,210Khz (Acoustic output=600watts)*
- **Input Power:** 11-30 volts D.C. (1.5 amps @ 12 v. 0.5 amp @ 30 v.) or 115/230 volts A.C. 50/60 hertz (20 watts)
- **Dimensions:** Height (including handle) 19 inches (48.26cm) Width 17.5 inches (44.45 cm)  
Depth 10 inches (25.4 cm) Weight: 36 lbs.(15.87 kg) (plus transducer)