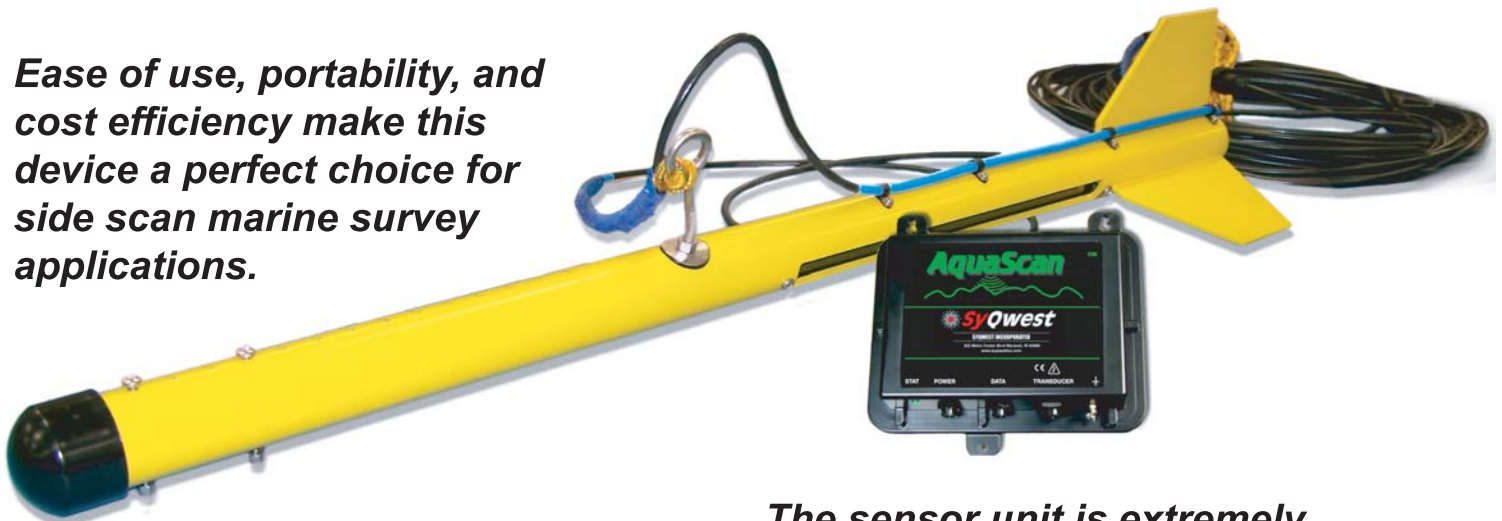


SyQwest Incorporated **AquaScan™** **Precision Side Scan Sonar**

The AquaScan™ is a portable high-resolution, precision side scan sonar. It is designed exclusively for shallow water seafloor surveys up to 250 meters of slant range. Available as a single frequency 200 kHz model.

Ease of use, portability, and cost efficiency make this device a perfect choice for side scan marine survey applications.



The sensor unit is extremely compact, interfaces directly to a standard laptop PC and comes complete with sensor unit and Windows® PC Software

- ◆ Centimeter Resolution
- ◆ GPS Input, NMEA Compatible
- ◆ Data Storage & Playback
- ◆ Zoom Modes ◆ Event Marks
- ◆ 8 Bit XTF Data Recording Format
- ◆ Compatible to all Industry Standard Side Scan Post-processing software packages

 **SyQwest inc**

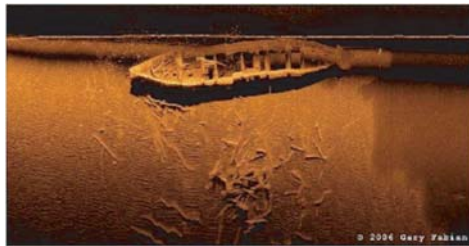
222 Metro Center Blvd. / Warwick, RI 02886

Tel: (401) 921-5170 Fax: (401) 921-5159

Email: sales@syqwestinc.com Web: www.syqwestinc.com

SyQwest Incorporated AquaScan™

SPECIFICATIONS



| | |
|-----------------------------------|--|
| Max Horizontal Resolution: | <1cm; Slant Range dependant |
| Pulse Lengths: | 5,10,25,50,200,400,800 (microseconds) |
| Beam Width: | 2 degrees x 30 degrees |
| Depression Angle: | 15 degrees |
| Output Power: | 1,000 Watts (pulsed) |
| Geographic Position: | NMEA 0183, GLL, GGA, RMC, VTG, VHW, HDT Selectable Baud Rates (RS-232) 4800, 9600, 19200, 38400 |
| Printer Output: | Interface to TDU Series Thermal Printers |
| Transmit Rate: | 10 Hz, depth and operator mode dependant |
| Event Marks: | Periodic, External, and/or Manual (Periodic selectable in 1 minute intervals) |
| Data File Output: | 8 Bit Industry Standard XTF ;Stores Navigation, and Graphic Data in ODC format (Proprietary) ; Zoom Data stored is Pixel data and can be played back and/or printed. |

Data File Playback: Files can be played back and/or printed at Normal or Fast-Forward speed, with Pause and Zoom and a Playback Scroll Bar for ease of file playback.

Frequency Output: 200 kHz

Input Power: 10-30 Volts DC, Nominal Power 8 watts, Reverse Polarity and Over Voltage Protected.

Dimensions: Sensor: 188mm (9.95") Width, 217.6mm (11.0") Height, and 62.2mm (2.45") Depth.

Fish: 122cm (48") Length, 32.4cm (12.76") Max Width

Weight: Sensor: .9kg (2 lbs). (sensor unit only)

Fish: 7.7kg (17 lbs). (fish and cable)

Cable Length: 30 meters (standard)

Environmental: 0 to 50 degrees C Operating Temperature 0 to 95° non-condensing

